



Demographic and Income Profile

Forsyth village, IL (1727091)
 Forsyth village, IL (1727091)
 Geography: Place

Summary	Census 2010	Census 2020	2022	2027
Population	3,512	3,734	3,627	3,490
Households	1,308	1,382	1,353	1,312
Families	1,018	-	1,026	993
Average Household Size	2.67	2.65	2.64	2.62
Owner Occupied Housing Units	1,142	-	1,132	1,109
Renter Occupied Housing Units	167	-	221	204
Median Age	42.7	-	46.4	47.8

Trends: 2022-2027 Annual Rate	Area	State	National
Population	-0.77%	-0.28%	0.25%
Households	-0.61%	-0.14%	0.31%
Families	-0.65%	-0.20%	0.28%
Owner HHs	-0.41%	0.15%	0.53%
Median Household Income	1.10%	3.11%	3.12%

Households by Income	2022		2027	
	Number	Percent	Number	Percent
<\$15,000	37	2.7%	24	1.8%
\$15,000 - \$24,999	56	4.1%	37	2.8%
\$25,000 - \$34,999	113	8.3%	82	6.2%
\$35,000 - \$49,999	139	10.3%	81	6.2%
\$50,000 - \$74,999	213	15.7%	208	15.8%
\$75,000 - \$99,999	161	11.9%	244	18.6%
\$100,000 - \$149,999	221	16.3%	160	12.2%
\$150,000 - \$199,999	106	7.8%	82	6.2%
\$200,000+	308	22.7%	395	30.1%

Median Household Income	\$92,170	\$97,361
Average Household Income	\$144,276	\$172,512
Per Capita Income	\$55,571	\$66,951

Population by Age	Census 2010		2022		2027	
	Number	Percent	Number	Percent	Number	Percent
0 - 4	178	5.1%	167	4.6%	148	4.2%
5 - 9	284	8.1%	189	5.2%	186	5.3%
10 - 14	285	8.1%	216	6.0%	210	6.0%
15 - 19	236	6.7%	264	7.3%	192	5.5%
20 - 24	107	3.0%	178	4.9%	162	4.6%
25 - 34	297	8.5%	347	9.6%	366	10.5%
35 - 44	496	14.1%	386	10.6%	347	9.9%
45 - 54	567	16.1%	516	14.2%	469	13.4%
55 - 64	452	12.9%	570	15.7%	545	15.6%
65 - 74	320	9.1%	431	11.9%	456	13.1%
75 - 84	210	6.0%	250	6.9%	296	8.5%
85+	79	2.3%	113	3.1%	113	3.2%

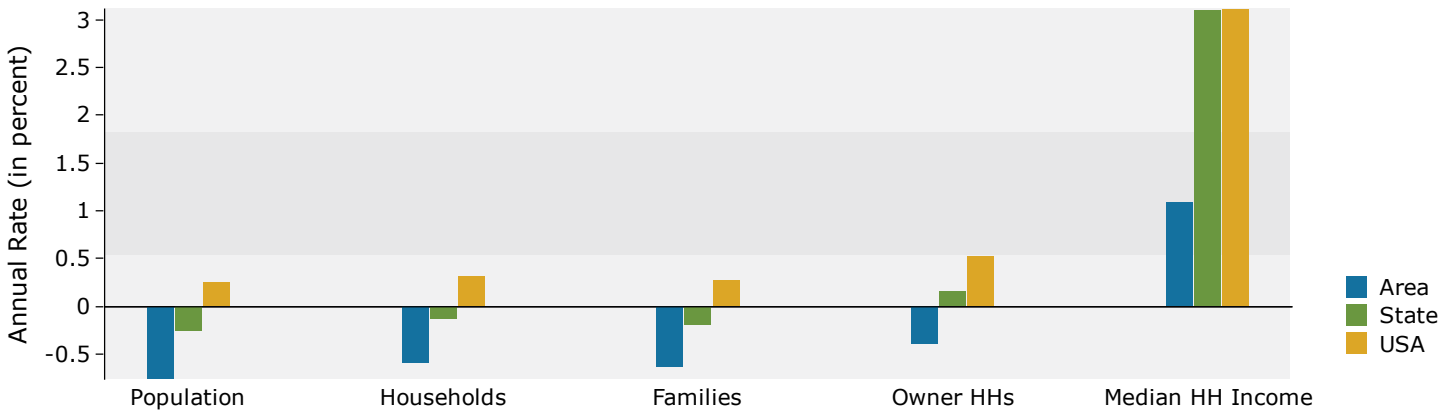
Race and Ethnicity	Census 2010		Census 2020		2022		2027	
	Number	Percent	Number	Percent	Number	Percent	Number	Percent
White Alone	3,127	89.0%	3,047	81.6%	2,973	82.0%	2,798	80.1%
Black Alone	104	3.0%	81	2.2%	94	2.6%	97	2.8%
American Indian Alone	6	0.2%	5	0.1%	6	0.2%	8	0.2%
Asian Alone	232	6.6%	408	10.9%	358	9.9%	377	10.8%
Pacific Islander Alone	0	0.0%	0	0.0%	0	0.0%	0	0.0%
Some Other Race Alone	12	0.3%	29	0.8%	28	0.8%	30	0.9%
Two or More Races	31	0.9%	164	4.4%	167	4.6%	181	5.2%
Hispanic Origin (Any Race)	60	1.7%	85	2.3%	84	2.3%	83	2.4%

Data Note: Income is expressed in current dollars.

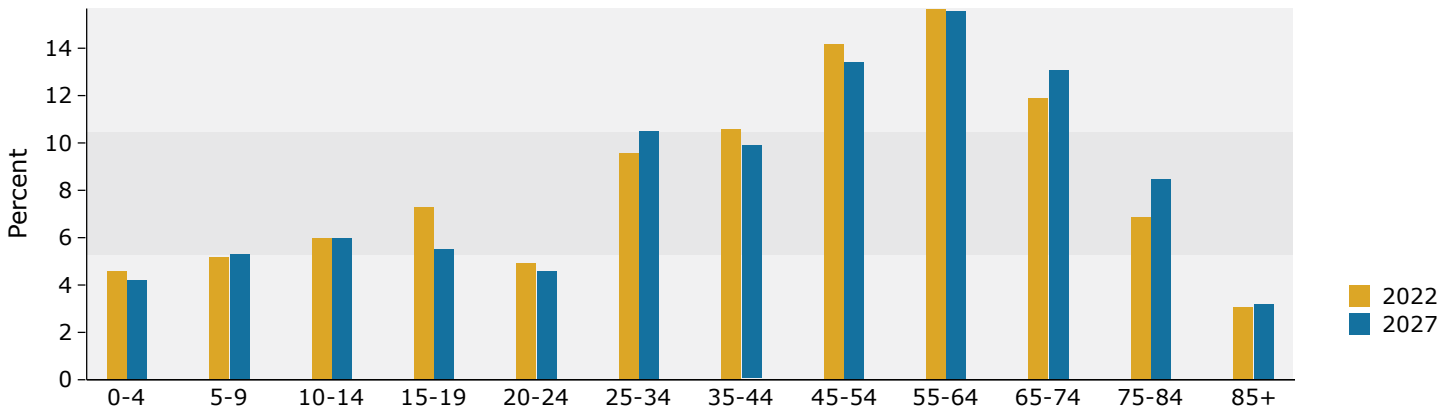
Source: Esri forecasts for 2022 and 2027. U.S. Census Bureau 2010 decennial Census data converted by Esri into 2020 geography.

Forsyth village, IL (1727091)
 Forsyth village, IL (1727091)
 Geography: Place

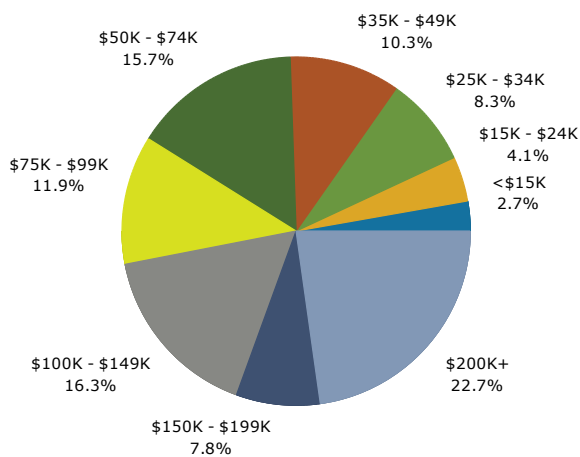
Trends 2022-2027



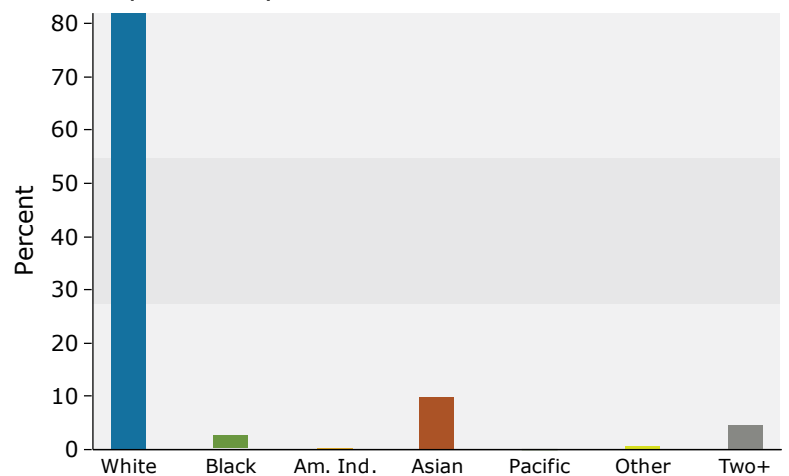
Population by Age



2022 Household Income



2022 Population by Race



2022 Percent Hispanic Origin: 2.3%