



Demographic and Income Profile

Macon County, IL (17115)

Geography: County

Summary	Census 2010	2015	2020
Population	110,768	109,331	107,776
Households	45,855	45,650	45,103
Families	29,326	28,897	28,370
Average Household Size	2.33	2.31	2.30
Owner Occupied Housing Units	32,085	30,937	30,492
Renter Occupied Housing Units	13,770	14,713	14,611
Median Age	40.3	41.2	42.1
Trends: 2015 - 2020 Annual Rate	Area	State	National
Population	-0.29%	0.21%	0.75%
Households	-0.24%	0.26%	0.77%
Families	-0.37%	0.14%	0.69%
Owner HHs	-0.29%	0.18%	0.70%
Median Household Income	2.71%	2.80%	2.66%

Households by Income	2015		2020	
	Number	Percent	Number	Percent
<\$15,000	6,389	14.0%	6,183	13.7%
\$15,000 - \$24,999	5,560	12.2%	4,237	9.4%
\$25,000 - \$34,999	6,013	13.2%	5,081	11.3%
\$35,000 - \$49,999	7,142	15.6%	6,880	15.3%
\$50,000 - \$74,999	7,770	17.0%	7,445	16.5%
\$75,000 - \$99,999	5,029	11.0%	6,466	14.3%
\$100,000 - \$149,999	5,292	11.6%	5,534	12.3%
\$150,000 - \$199,999	1,286	2.8%	1,962	4.4%
\$200,000+	1,169	2.6%	1,315	2.9%
Median Household Income	\$44,091		\$50,386	
Average Household Income	\$61,128		\$69,033	
Per Capita Income	\$26,009		\$29,392	

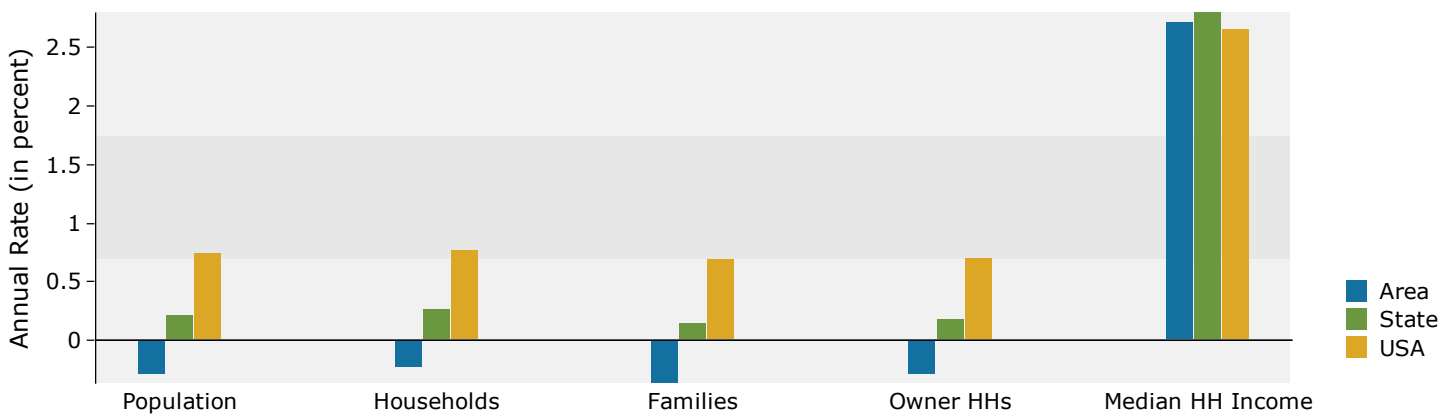
Population by Age	Census 2010		2015		2020	
	Number	Percent	Number	Percent	Number	Percent
0 - 4	6,936	6.3%	6,466	5.9%	6,222	5.8%
5 - 9	6,876	6.2%	6,623	6.1%	6,247	5.8%
10 - 14	6,970	6.3%	6,687	6.1%	6,746	6.3%
15 - 19	7,774	7.0%	6,897	6.3%	6,915	6.4%
20 - 24	7,080	6.4%	7,318	6.7%	6,276	5.8%
25 - 34	12,988	11.7%	12,842	11.7%	12,517	11.6%
35 - 44	12,795	11.6%	12,544	11.5%	12,558	11.7%
45 - 54	16,297	14.7%	13,994	12.8%	12,654	11.7%
55 - 64	14,910	13.5%	15,803	14.5%	15,072	14.0%
65 - 74	9,079	8.2%	11,044	10.1%	12,661	11.7%
75 - 84	6,222	5.6%	6,084	5.6%	6,836	6.3%
85+	2,841	2.6%	3,029	2.8%	3,072	2.9%

Race and Ethnicity	Census 2010		2015		2020	
	Number	Percent	Number	Percent	Number	Percent
White Alone	87,855	79.3%	84,939	77.7%	81,734	75.8%
Black Alone	18,027	16.3%	18,811	17.2%	19,544	18.1%
American Indian Alone	226	0.2%	235	0.2%	241	0.2%
Asian Alone	1,118	1.0%	1,336	1.2%	1,599	1.5%
Pacific Islander Alone	32	0.0%	51	0.0%	73	0.1%
Some Other Race Alone	756	0.7%	862	0.8%	1,024	1.0%
Two or More Races	2,754	2.5%	3,097	2.8%	3,561	3.3%
Hispanic Origin (Any Race)	2,072	1.9%	2,424	2.2%	2,878	2.7%

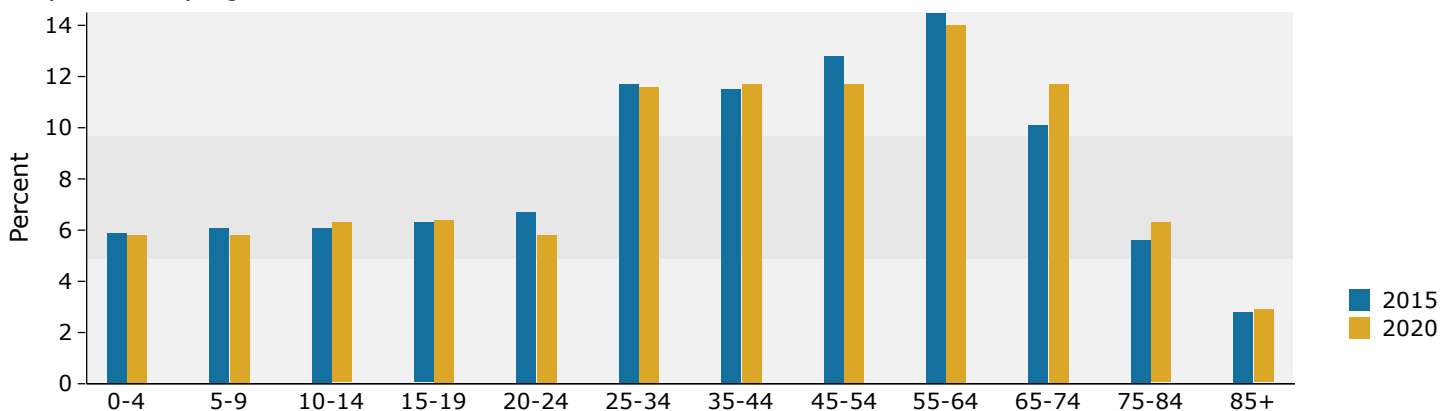
Data Note: Income is expressed in current dollars.

Source: U.S. Census Bureau, Census 2010 Summary File 1. Esri forecasts for 2015 and 2020.

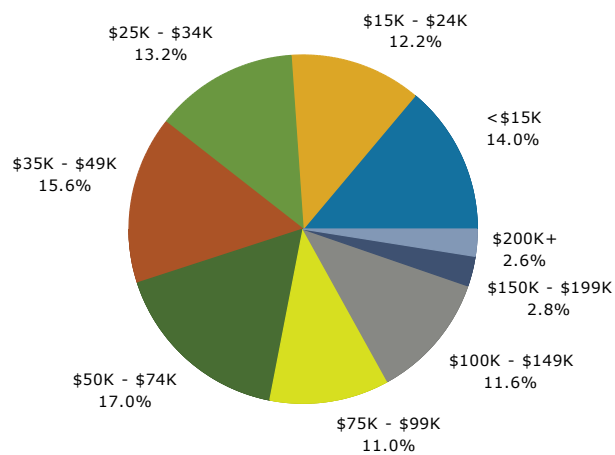
Trends 2015-2020



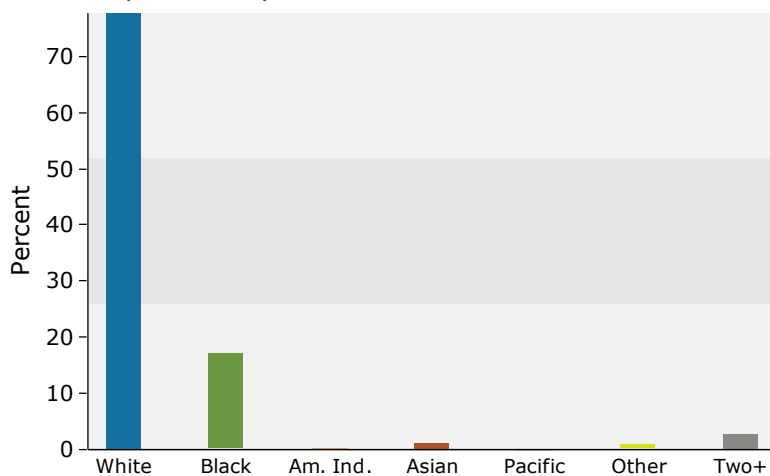
Population by Age



2015 Household Income



2015 Population by Race



2015 Percent Hispanic Origin: 2.2%